

Fenway / Kilmarnock

BCDC

January 8, 2019

What We Heard...

- Point 1)** Develop **ground plane** including landscape, entrances and courtyards
- Point 2)** Study **private alley connector** language and public environment including Alley
- Point 3)** Study **Peterborough facade** to better relate to adjacent buildings
- Point 4)** Contextualize **West building** including scale of corner presence.

Locus



Fenway Park

Boylston St

Jersey St

SITE

Kilmarnock St

Back Bay Fens

MFA

Emmanuel College

Simmons University



CIM



Cabot, Cabot & Forbes



FENWAY - KILMARNOCK

cbt

Proposed Aerial



233,006 GSF

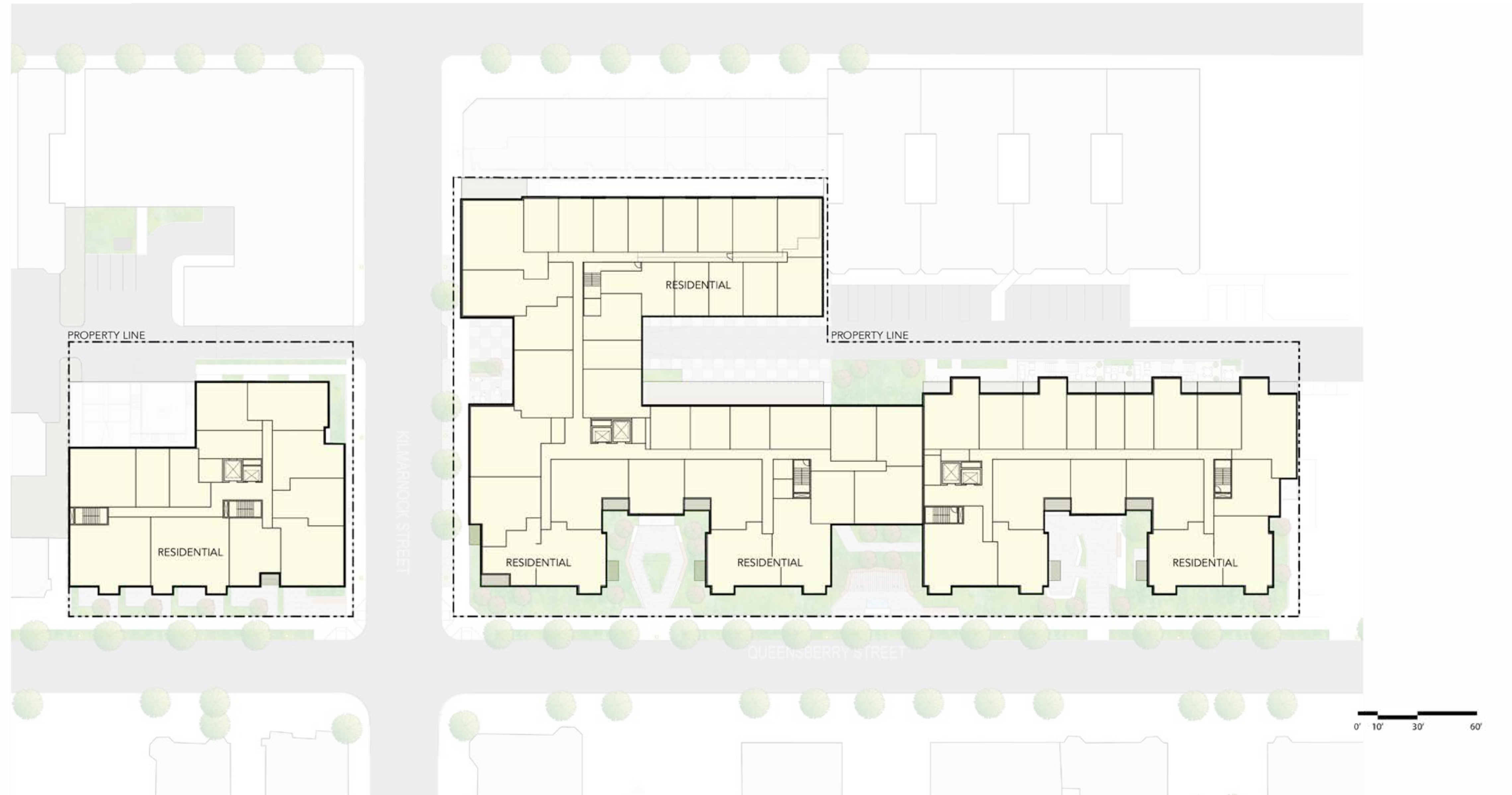
126,086 GSF

90,800 GSF

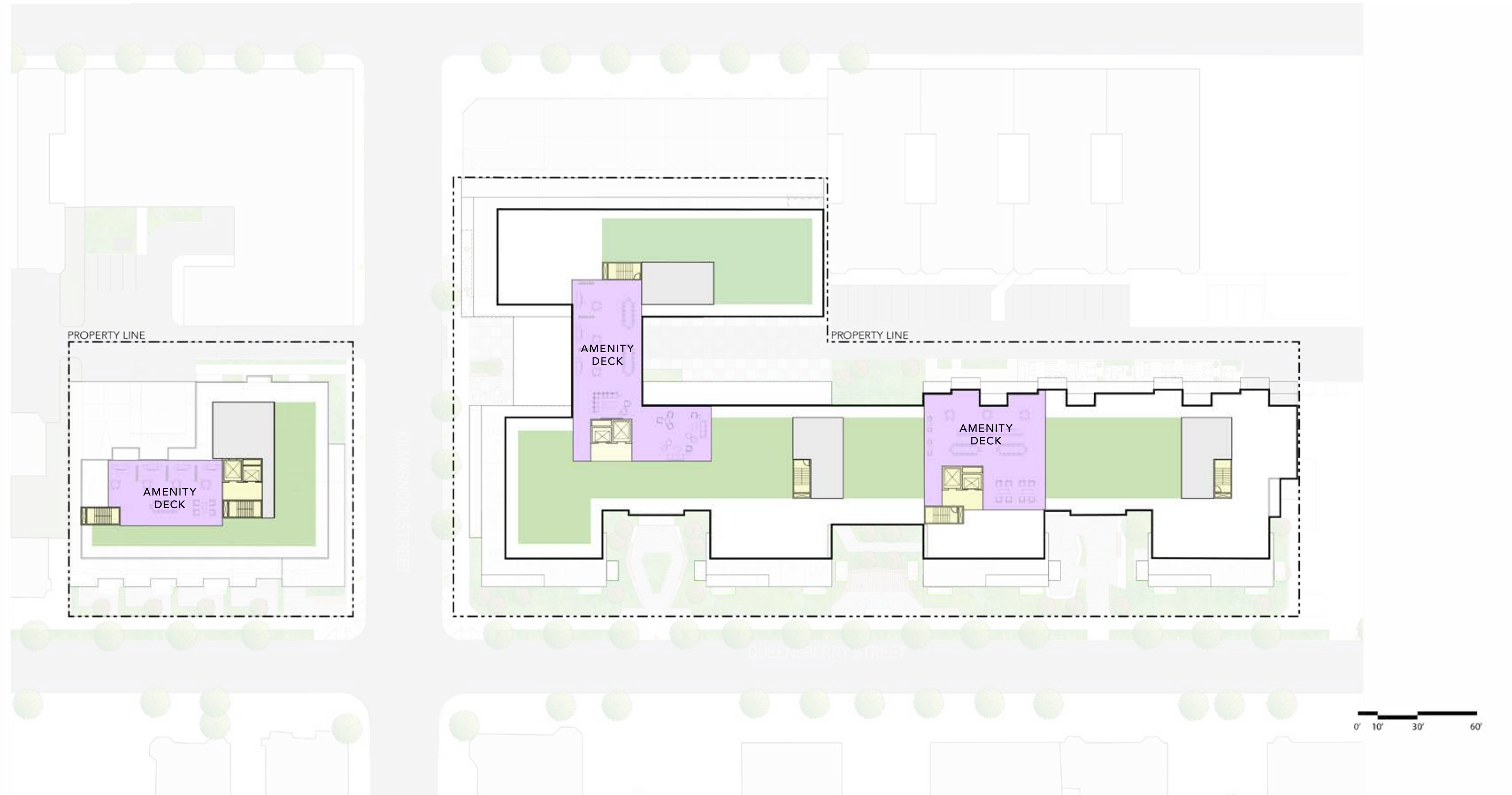
Planning - (Point 1)
Ground Floor Plan - Proposed



Planning - (Point 1)
Typical Residential Floor Plan - Proposed



Planning - (Point 1)
Roof Floor Plan - Proposed



Planning - (Point 1)
Ground Floor Plan - Proposed



Planning - (Point 1)
Ground Floor Plan - Proposed



Planning - (Point 1)
Ground Floor Plan - Proposed



Planning - (Point 1)
Ground Floor Plan - Proposed



BUILDING 1 - COURTYARD

HALVORSON DESIGN
PARTNERSHIP

Design - (Point 2)
Private Alley Connector Environment - Previous



Design - (Point 2)
Private Alley Connector Environment - Proposed



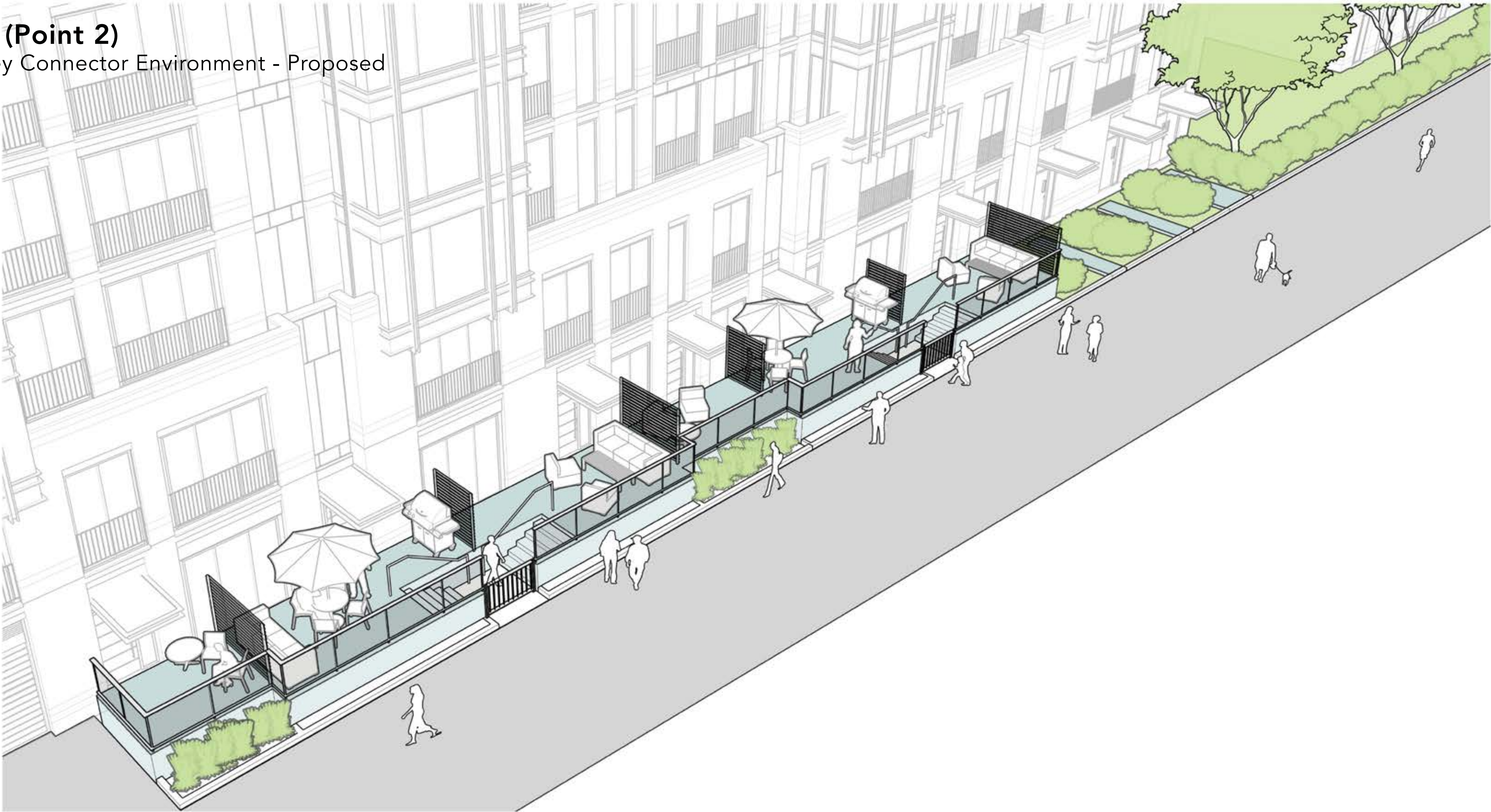
Design - (Point 2)
Private Alley Connector - Proposed



Design - (Point 2)
Private Alley Connector Environment - Proposed



Design - (Point 2)
Private Alley Connector Environment - Proposed



EASTERN BLDG ALLEY TERRACES - AERIAL VIEW

Design - (Point 3)
Peterborough - Proposed





Design - (Point 4)
West Building - Proposed



Design - (Point 4)
West Building - Proposed





WESTERN BLDG FRONT TERRACES

HALVORSON DESIGN
PARTNERSHIP

THANK YOU